

September 12, 2019

Toledo Public Schools

Presenters:

Dr. Romules Durant
CEO/Superintendent

Toledo Public Schools



© 2019 Toledo Public Schools

A Letter to the Community

TPS SHOWS PROGRESS...

Today, the Ohio Department of Education releases its report card for public schools - and Toledo Public Schools has good news to share with the community.

The district has improved on the overall State Report Card, which means TPS has moved out of Academic Distress. Our progress is credited to the work of our students, teachers and staff, all of whom are making tremendous strides.

Our graduation rates continue to improve and our Early Childhood program has shown growth. We are pleased that the improvements in our internal data are beginning to show in the report card.

Toledo Public Schools welcomes transparency about its performance, but believes the State Report Card gives a woefully incomplete picture of public education in this and other urban districts.

Even with these results, the State Report Card remains overly broad and continues to fail to accurately capture our progress. That is why we feel compelled to tell a more complete story. The summary below is supported by a full set of performance data which can be found at www.tps.org.

Dr. Romules Durant

CEO/ Superintendent

Mrs. Stephanie Eichenberg

President, Board of Education

Mr. Bob Vasquez

Vice President, Board of Education

Mr. Perry Lefevre

Board Member

Mrs. Polly Taylor-Gerken

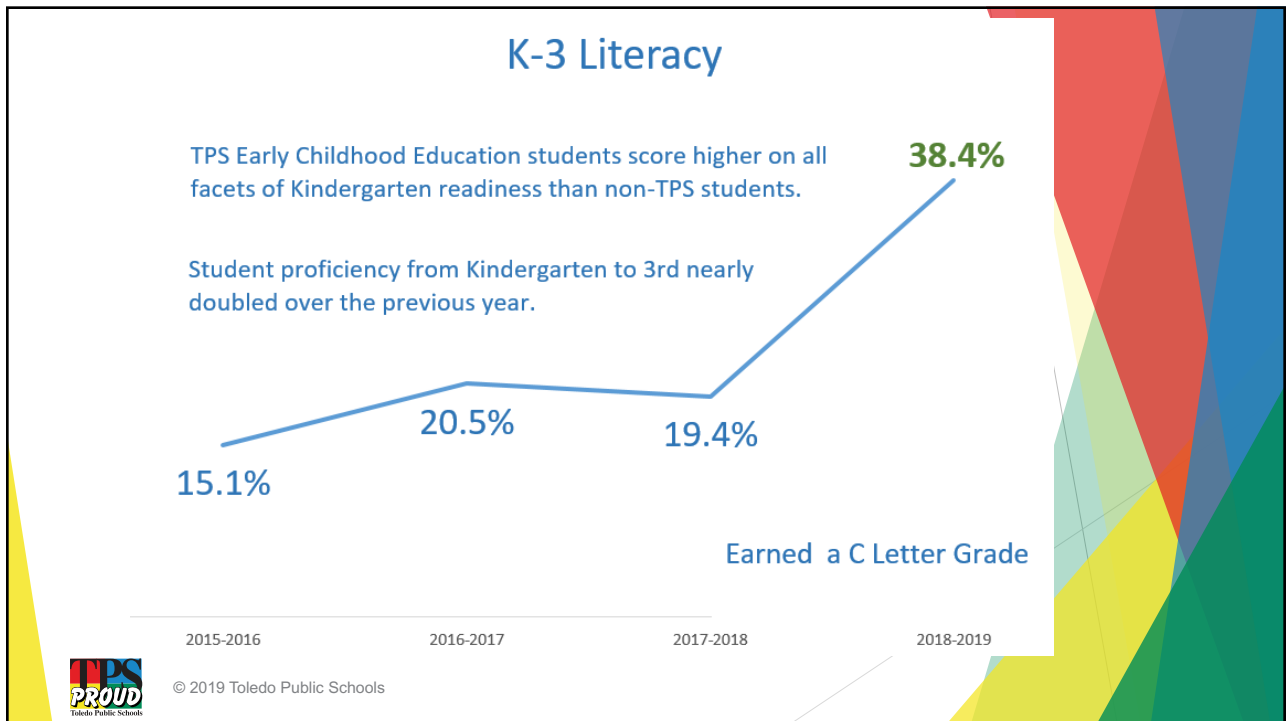
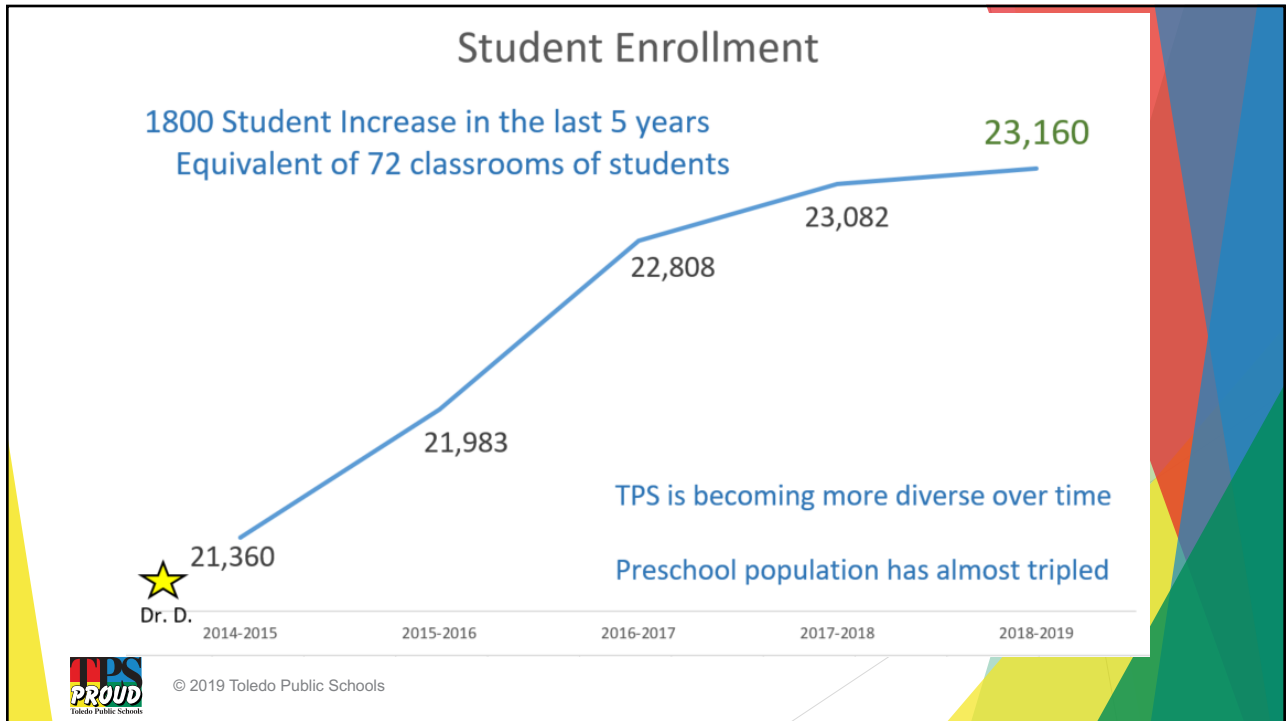
Board Member

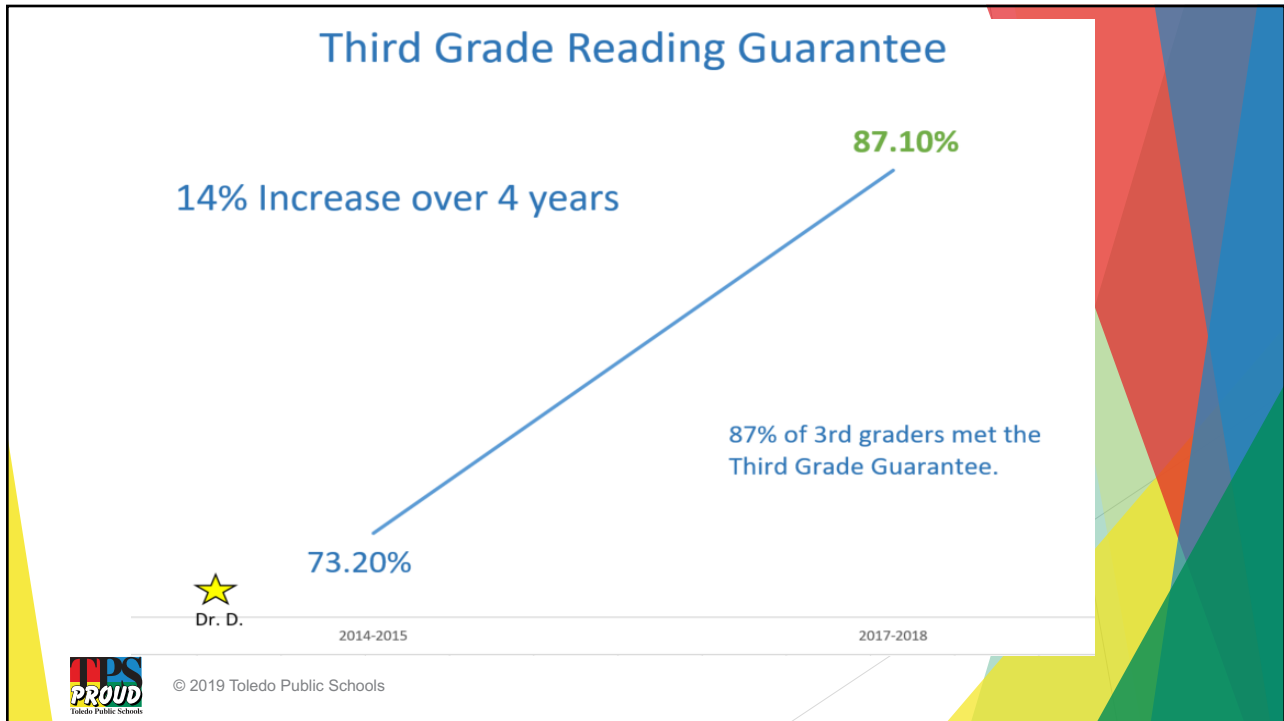
Mrs. Christine Varwig

Board Member




© 2019 Toledo Public Schools






Outstanding School Achievements




**Performance Index/
Achievement Growth**

Jones Leadership	10.71
Chase STEM	7.88
MLK for Boys	7.74
Rogers HS	7.61
McKinley STEMM	7.43
Westfield/Robinson	6.75
Toledo Early College	6.57
Woodward	5.02



Value Added Gain Increases

Toledo Technology	4.8
Toledo Early College	3.6
Chase STEM	3.4
Westfield/Robinson	2.0
MLK Academy for Boys	1.9
Beverly Elementary	1.8
Grove Patterson Academy	1.7
Oakdale Elementary	1.7



Value Added Grades

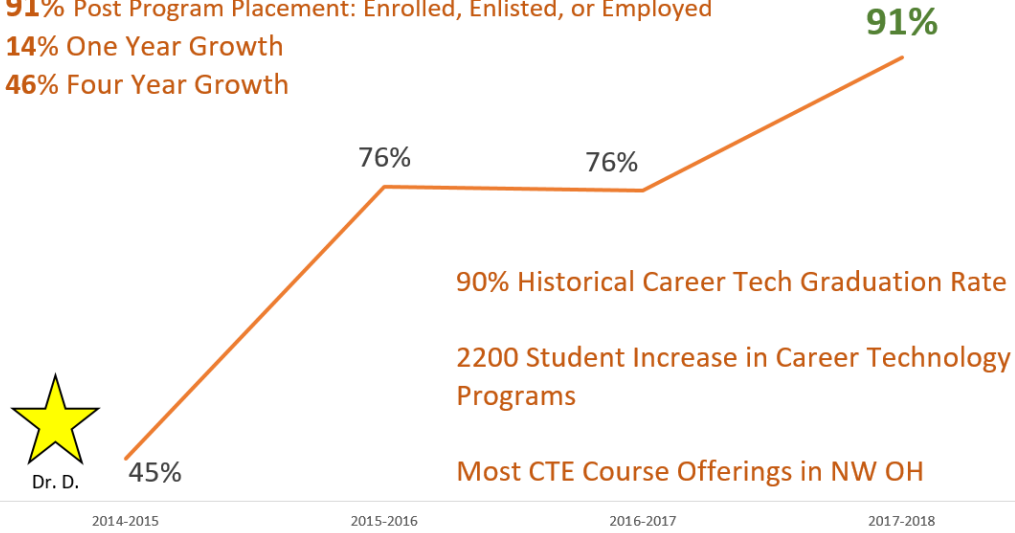
Chase STEM	A
Toledo Early College	A
Toledo Technology	A
Beverly Elementary	B
Burroughs Elementary	B
Elmhurst Elementary	B
Grove Patterson Academy	B
Harvard Elementary	B
Jones Leadership	B
MLK Academy for Boys	B
Oakdale Elementary	B
Old West End Academy	B
Westfield/Robinson	B
Whittier Elementary	B

TPS
PROUD
Toledo Public Schools

© 2019 Toledo Public Schools

Career Technology Placement Rate

91% Post Program Placement: Enrolled, Enlisted, or Employed
14% One Year Growth
46% Four Year Growth



90% Historical Career Tech Graduation Rate

2200 Student Increase in Career Technology Programs

Most CTE Course Offerings in NW OH



© 2019 Toledo Public Schools

College & Career Ready



Dual Enrollment Credits

Dual enrollment and college credits earned continues to increase with over 27% of graduates earning credits.

5.4% increase over 3 years



Overall Prepared for Success

Overall score continues to rise with students taking advantage of both college & career opportunities in TPS.

4.2% Increase over 3 years

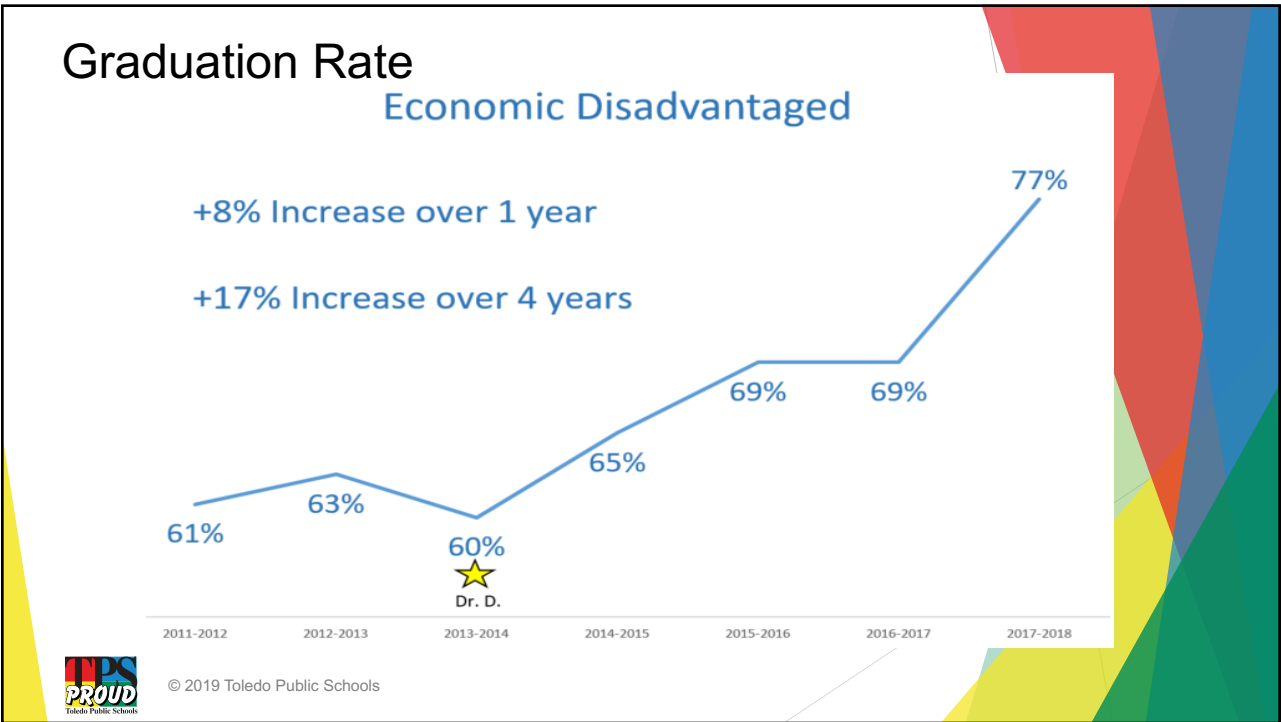
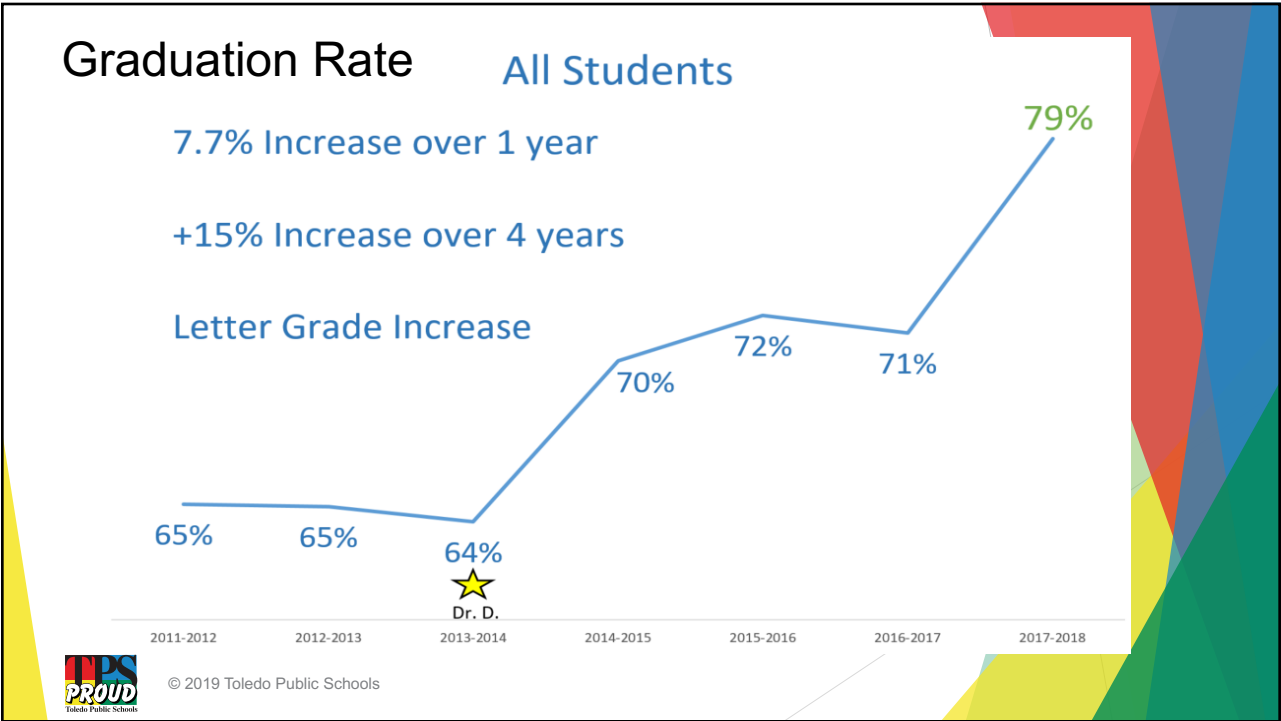


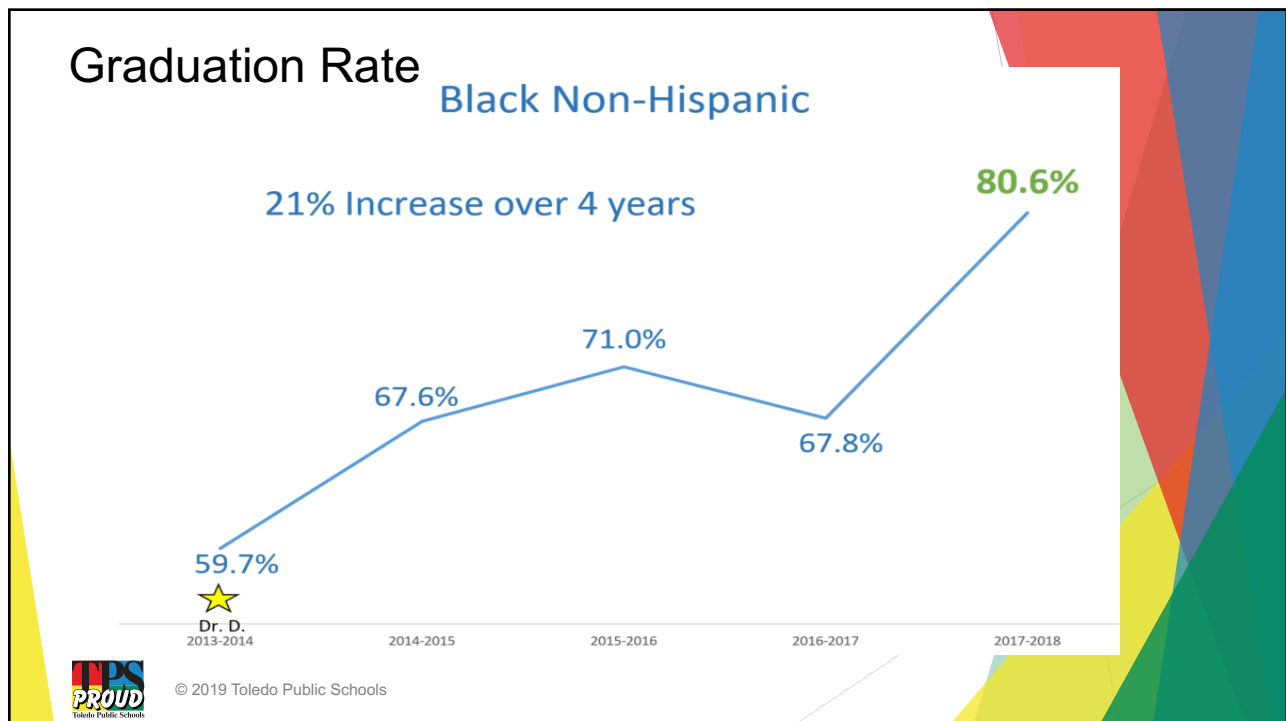
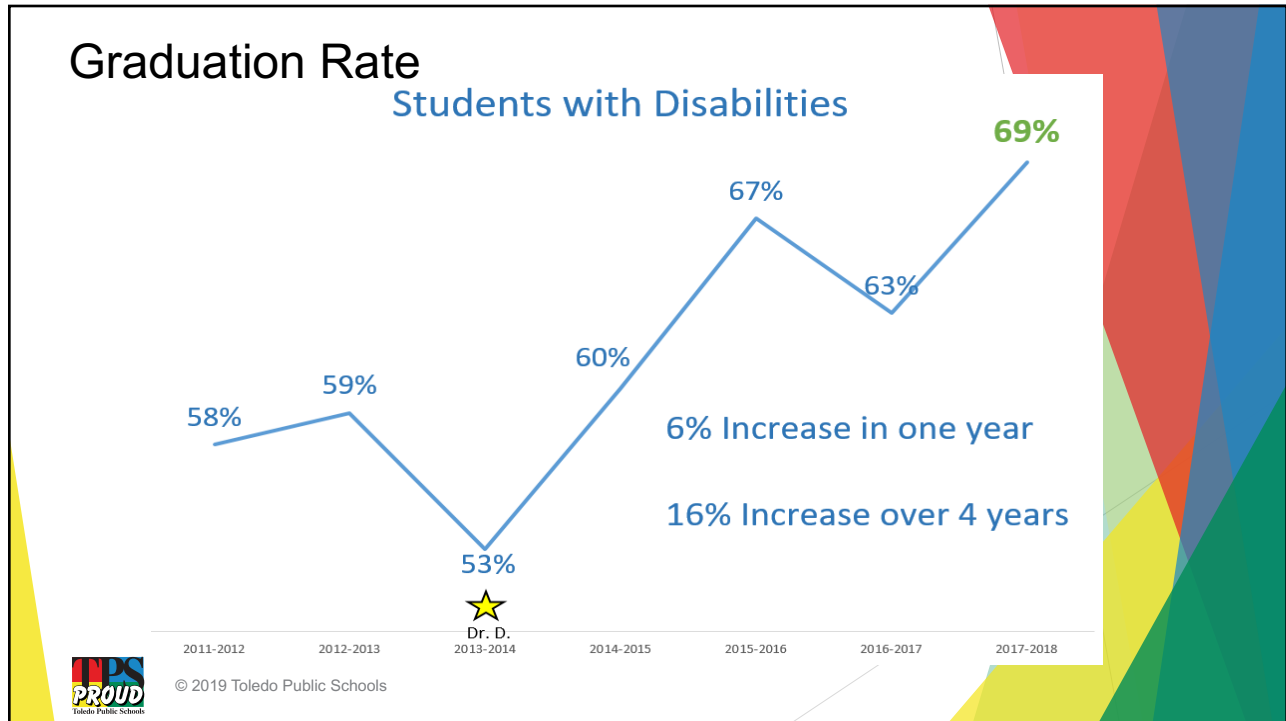
Outstanding Graduation Rate Increases

Jesup W. Scott HS	28.40%
Start HS	16.10%
Waite HS	7.5%
Woodward HS	4.7%



© 2019 Toledo Public Schools

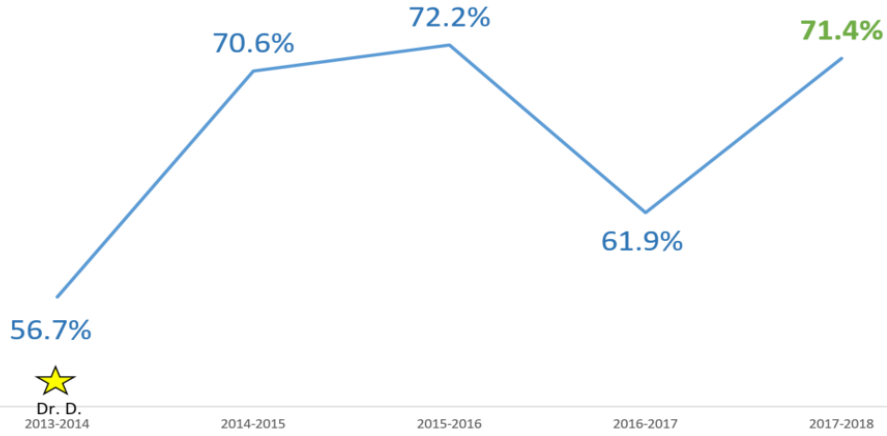




Graduation Rate

Hispanic

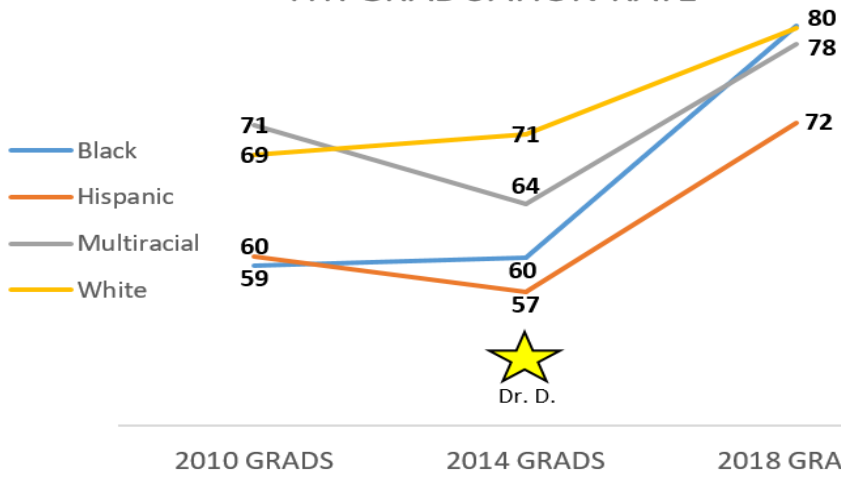
14% Increase over 4 years



© 2019 Toledo Public Schools

Graduation Rate - Gap Closing

HISTORICAL 4YR GRADUATION RATE



© 2019 Toledo Public Schools

Thank you

Visit TPS.org

Follow us on social media



© 2019 Toledo Public Schools